

### Specification

Nominal Voltage	12V	
Nominal Capacity(20HR)	15.0AH	
Dimensions	Length	181.5±2mm (7.14 inches)
	Width	77±1mm (3.03 inches)
	Container Height	167.5±2mm (6.59 inches)
	Total Height (with Terminal)	167.5±2mm (6.59 inches)
	Approx Weight	Approx 4.9 kg (10.8lbs)
Terminal	T3	
Container Material	ABS	
Rated Capacity	15.0 AH/0.75A	(20hr , 1.80V/cell,25°C/77°F)
	14.0 AH/1.40A	(10hr, 1.80V/cell,25°C/77°F)
	12.8 AH/2.55A	(5hr, 1.75V/cell,25°C/77°F)
	11.5 AH/3.83A	(3hr, 1.75V/cell,25°C/77°F)
	9.42 AH/9.42A	(1hr, 1.60V/cell,25°C/77°F)
Max. Discharge Current	225A (5s)	
Internal Resistance	Approx 18mΩ	
Operating Temp.Range	Discharge	-15~50°C (5~122°F)
	Charge	0~40°C (32~104°F)
	Storage	-15~40°C (5~104°F)
Nominal Operating Temp. Range	25±3°C (77±5°F)	
Cycle Use	Initial Charging Current less than 4.5A.Voltage	
	14.4V~15.0V at 25°C(77°F)Temp. Coefficient -30mV/°C	
Standby Use	No limit on Initial Charging Current Voltage	
	13.5V~13.8V at 25°C(77°F)Temp. Coefficient -20mV/°C	
Capacity affected by Temperature	40°C (104°F)	103%
	25°C (77°F)	100%
	0°C (32°F)	86%
Self Discharge	Leoch DJW series batteries may be stored for up to 6 months at 25°C(77°F) and then a freshening charge is required.	
	For higher temperatures the time interval will be shorter.	



### Applications

- ◆ All purpose
- ◆ Uninterruptable Power Supply (UPS)
- ◆ Electric Power System (EPS)
- ◆ Emergency backup power supply
- ◆ Emergency light
- ◆ Railway signal
- ◆ Aircraft signal
- ◆ Alarm and security system
- ◆ Electronic apparatus and equipment
- ◆ Communication power supply
- ◆ DC power supply
- ◆ Auto control system



### Constant Current Discharge (Amperes) at 25 °C (77°F)

F.V/Time	5min	10min	15min	20min	30min	45min	1h	2h	3h	4h	5h	6h	8h	10h	20h
1.85V/cell	28.6	21.9	18.2	15.7	12.1	8.95	7.54	4.46	3.49	2.84	2.31	2.01	1.62	1.35	0.74
1.80V/cell	38.3	28.0	22.0	18.6	14.3	10.4	8.45	4.87	3.76	3.03	2.48	2.15	1.72	1.40	0.75
1.75V/cell	43.2	30.8	24.0	20.0	14.9	10.8	8.84	5.05	3.83	3.10	2.55	2.21	1.75	1.43	0.76
1.70V/cell	47.6	33.6	25.6	21.0	15.5	11.2	9.12	5.18	3.93	3.18	2.61	2.26	1.77	1.46	0.77
1.65V/cell	52.5	36.2	27.2	22.3	16.3	11.5	9.33	5.25	4.10	3.29	2.69	2.31	1.80	1.49	0.78
1.60V/cell	57.9	39.3	29.1	23.8	17.3	12.0	9.42	5.48	4.22	3.39	2.78	2.36	1.82	1.51	0.79

### Constant Power Discharge (Watts/cell) at 25 °C (77°F)

F.V/Time	5min	10min	15min	20min	30min	45min	1h	2h	3h	4h	5h	6h	8h	10h	20h
1.85V/cell	52.2	40.5	33.9	29.6	23.2	17.2	14.6	8.66	6.80	5.55	4.54	3.95	3.20	2.68	1.47
1.80V/cell	69.4	51.2	40.4	34.5	26.9	19.9	16.2	9.39	7.28	5.89	4.85	4.22	3.38	2.76	1.48
1.75V/cell	76.5	55.3	43.6	36.8	27.7	20.4	16.9	9.70	7.38	6.00	4.96	4.32	3.43	2.83	1.50
1.70V/cell	81.9	58.9	45.9	38.3	28.7	21.1	17.4	9.92	7.58	6.15	5.08	4.40	3.48	2.88	1.52
1.65V/cell	89.1	63.0	48.4	40.4	30.0	21.5	17.6	10.0	7.87	6.34	5.20	4.49	3.52	2.94	1.54
1.60V/cell	96.0	66.9	50.9	42.6	31.4	22.3	17.7	10.4	8.07	6.52	5.35	4.57	3.55	2.96	1.55

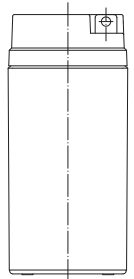
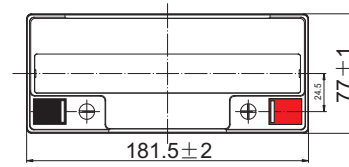
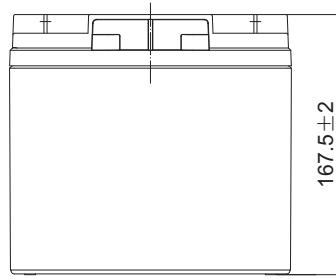
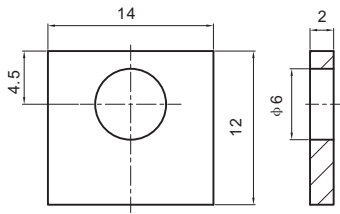
Specifications subject to change without notice.



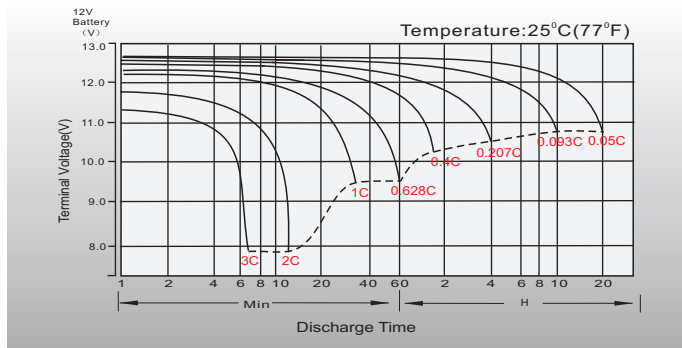
# Dimensions

## T3 Terminal

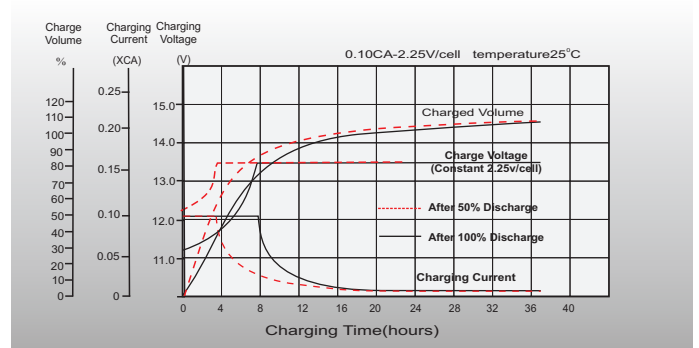
Unit: mm



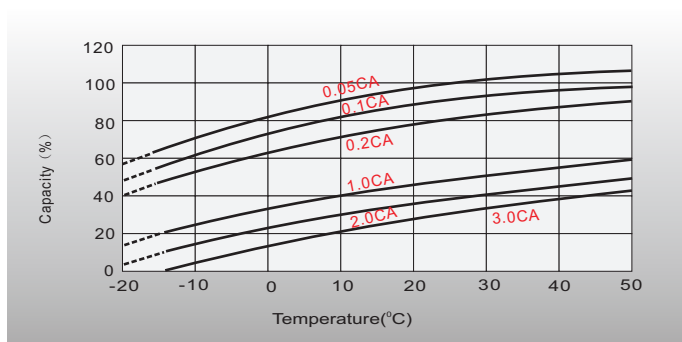
## Discharge Characteristics



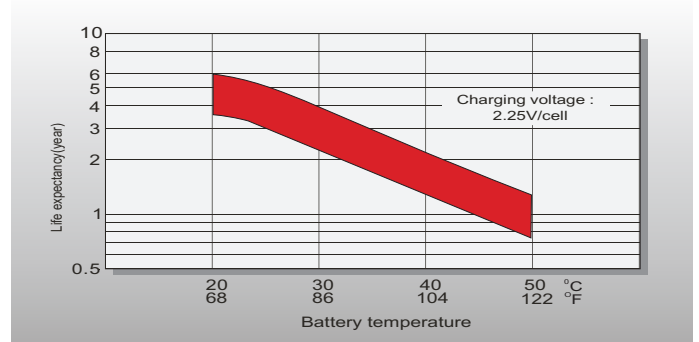
## Float Charging Characteristics



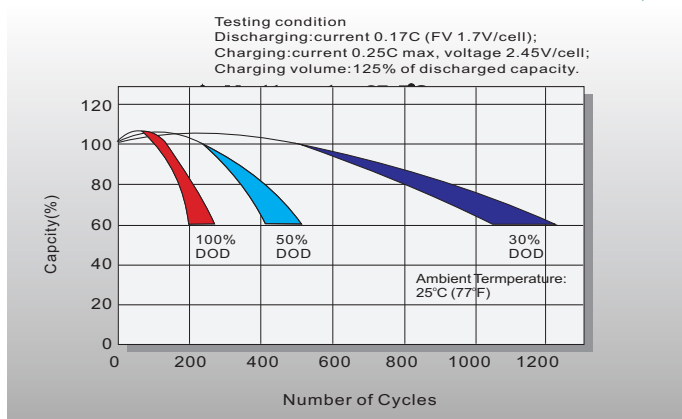
## Temperature Effects in Relation to Battery Capacity



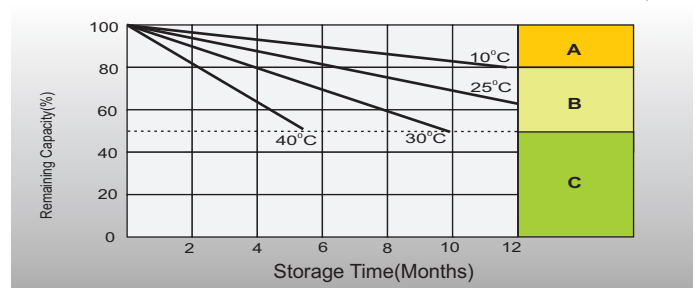
## Effect of Temperature on Long Term Float Life



## Cycle Life in Relation to Depth of Discharge



## Self Discharge Characteristics



- A** No supplementary charge required (Carry out supplementary charge before use if 100% capacity is required.)
- B** Supplementary charge required before use. Optional charging way as below:  
1. Charged for above 3 days at limited current 0.25CA and constant voltage 2.25V/cell.  
2. Charged for above 20 hours at limited current 0.25CA and constant voltage 2.45V/cell.  
3. Charged for 8-10 hours at limited current 0.05CA.
- C** Supplementary charge may often fail to recover the capacity. The battery should never be left standing till this is reached.