



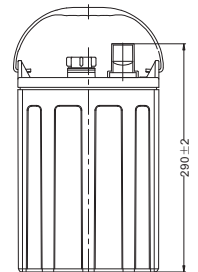
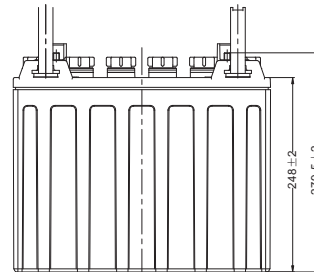
理士电池  
LEOCH BATTERY

## GOLF CART BATTERY

# DT1275(12V150AH)

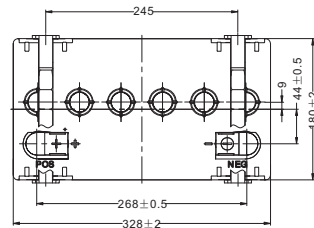
### Physical Specification

Nominal Voltage	12V
Nominal Capacity(20HR)	150Ah
Nominal Capacity(5HR)	120Ah
Length	328±2mm(12.92inches)
Width	180±2mm(7.09inches)
Container Height	248±2mm(9.76inches)
Total Height	279.5±2mm(11.00inches)
Dry Weight	Approx 27.2Kg(60.0lbs)
Wet Weight	Approx 36.7Kg(80.9lbs)
Acid	1.280±0.015g/cm <sup>3</sup> (25℃)
Standard Terminal	DT-M8(A)
Container Material	PP



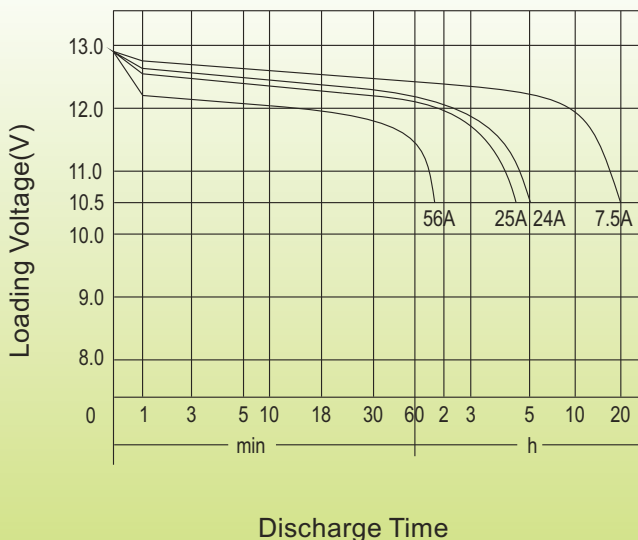
### Electrical Specification

Rated Capacity	20 hour rate(7.5A)	150Ah
	5 hour rate(24A)	120Ah
Reserve Capacity	25Amps	280min
	56Amps	102min



Terminal	
D Positive	19.5±0.2
Negative	17.9±0.2

### Discharge Characteristics(25℃, 77°F)



### Charge Method

#### Initial Charge:

- ① 0.1C<sub>20</sub> (A) charging 15h
- ② 0.05C<sub>20</sub> (A) charging 10h

The temperature of the battery should be below 50℃ during charging.

#### Supplement Charge:

a) Charging at a constant voltage of 14.7~15V/cell and a limited current 0.25C<sub>20</sub> (A) until the electrolyte density up to 1.280g/cm<sup>3</sup> (30℃) and the current not change for 3 hours.

b) Charge with constant current 0.1C<sub>20</sub> (A) until the voltage between 15.6~16.8V/cell, and voltage maintains for 3 hours and not change.

Two method optional